

>>> RFT Interface Relay

RFT Socket

>>> SRT□□-E

Presentation



10/16 AMPS 300 VOLTS



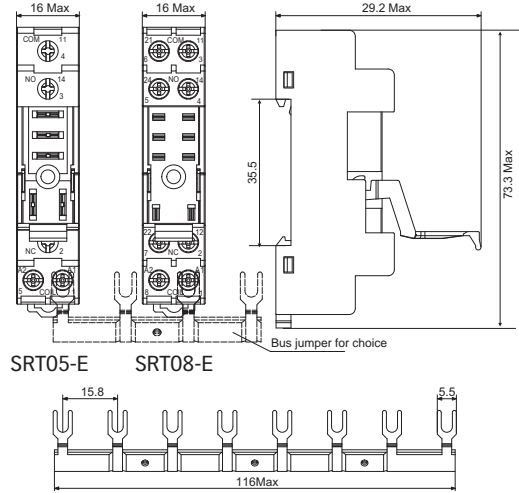
Characteristics

Type			SRT05-E	SRT08-E
Nominal load	Current	A	16	10
	Voltage	V	300	
Dielectric strength	Between coil and contact	V/min	4000	
	Between contacts	V/min	2500	
Max. tightening torque		Nm	1.0	
Wire size		AWG/mm ²	20-14/0.5-2.5	
Ambient temperature		°C	-45~85	
Unit weight		g	22	27

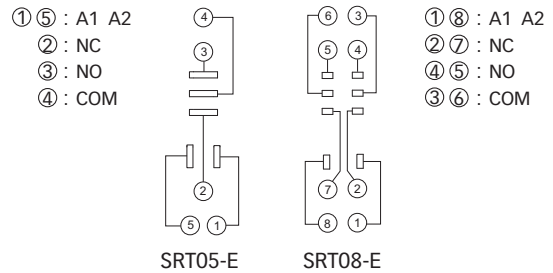
Relay, accessories selection table

Socket	Plastic clip	Metal clip	ID tag	Module	DIN rail	Bus jumper
SRT05-E	SR20	-	-	-	PFP	SR08C
SRT08-E	(included in socket)	-	-	-	PFP	SR08C

Dimensions (mm)



Connection Diagrams



>>> SRT□□-A

Presentation



10/16 AMPS 300 VOLTS



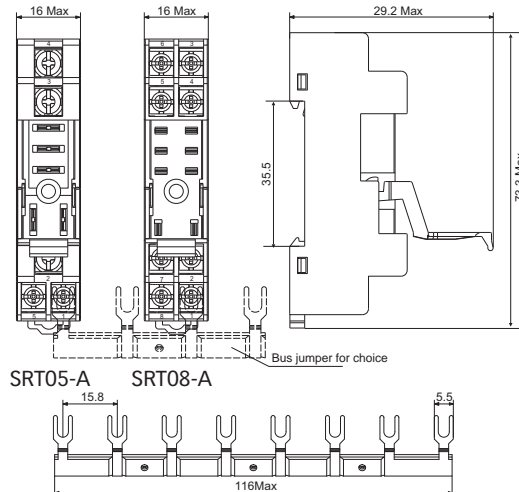
Characteristics

Type			SRT05-A	SRT08-A
Nominal load	Current	A	16	10
	Voltage	V	300	
Dielectric strength	Between coil and contact	V/min	4000	
	Between contacts	V/min	2500	
Max. tightening torque		Nm	1.0	
Wire size		AWG/mm ²	20-14/0.5-2.5	
Ambient temperature		°C	-45~85	
Unit weight		g	22	27

Relay, accessories selection table

Socket	Plastic clip	Metal clip	ID tag	Module	DIN rail	Bus jumper
SRT05-A	SR20	-	-	-	PFP	SR08C
SRT08-A	(included in socket)	-	-	-	PFP	SR08C

Dimensions (mm)



Connection Diagrams

