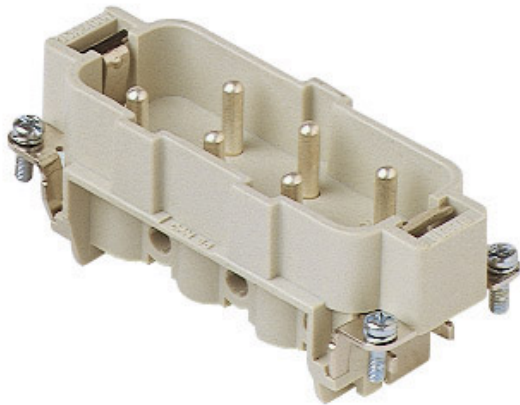



Part number

CPM 06



Male insert, CP series, screw terminal connection, 6 poles + PE, 35 A 400/690 V 6 kV 3, size "77.27", with plate

Product description

Product type	Insert
Series	CP
Connection type	Screw terminal connection
Gender	Male
N. of poles	6 poles + 
Size	Size "77.27"
Specification	With plate

Technical data

Current	35 A
Voltage	400 - 690 V
Rated impulse withstand voltage	6 kV
Pollution degree	3
Rated voltage according to UL/CSA	600 V
Wire cross-section	0,75 mm ² - 6,00 mm ²
AWG size	18 - 10
Contact type	Turned silver plated
IP degree of protection	IP20 without enclosure, IP65/IP66/IP68/IP69 with enclosure

Further technical details

Characteristics according to EN 61984	35A 400/690V 6kV 3
Mating cycles	≥ 500
Insulation resistance	≥ 10 GΩ
Contact resistance	≤ 0,5 mΩ
Weight	79,00 g
Operating temperature range (min, max)	-40 °C ... +125 °C
UL 94 flammability rating	V-0
Torque for main contact	M4: 1,2 Nm; 10,6 lb.in (Ph1 or 0,8 x 4 mm)

Material properties

Main material	Polycarbonate (PC)
Other materials	Contacts: copper alloy
Colour	RAL 7032 grey
RoHs conformity	Compliant with exemption 6(c): copper alloy containing up to 4% lead by weight
China RoHs - EFUP	50
REACH SVHC substances	Yes Lead
SCIP number	1a9c93ff-0445-4a16-81e3-1609ac5274d6

Approvals / Standards

Reference standard	EN 61984:2009-06
Certifications	CSA, CQC, DNV, BV, EAC
UL	ECBT2

General ordering information

EAN13 code	8015747036894
eCl@ss 8.1	27440205
ETIM 7.0	EC000438

Packaging Information

Packaging length	210,00 mm
Packaging height	200,00 mm
Packaging width	130,00 mm
Packaging weight	1,89 kg
Packaging volume	5,46 dm ³
Packaging description	Carton box
Packaging quantity	20 Pcs
Packaging EAN code	8015747036900
Sub-packaging length	87,00 mm
Sub-packaging height	36,00 mm
Sub-packaging width	180,00 mm
Sub-packaging weight	0,47 kg
Sub-packaging volume	0,56 dm ³
Sub-packaging description	Carton tray
Sub-packaging quantity	5 Pcs
Sub-packaging EAN barcode	8015747036917

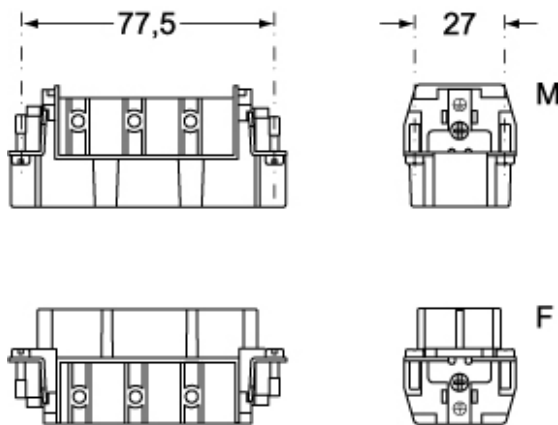
Part number

CPM 06

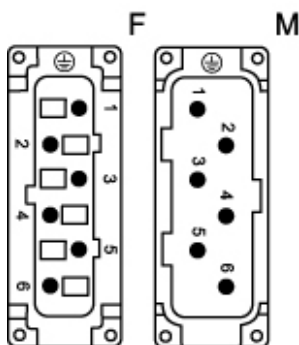


Catalogue drawings

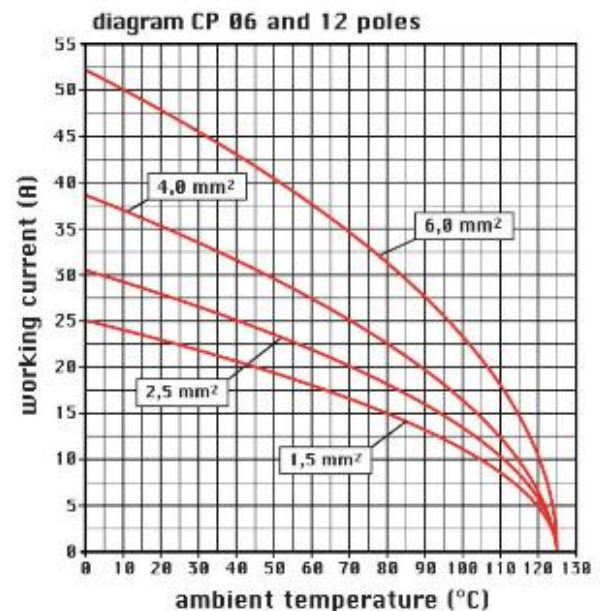
CPM 06



CPF 06



Catalogue drawings



Notes

CPF/M 06 inserts

- characteristics according to EN 61984: 35A 400/690V 6kV 3
 - UL, CSA, CCC, GOST certified
 - rated voltage according to UL/CSA: 600V
 - insulation resistance: > 10 GOhm
 - ambient temperature limit: -40 °C ... +125 °C
 - are made of self-extinguishing thermoplastic resin UL 94 V0
 - mechanical life: > 500 cycles
 - contact resistance: < 0,5 mOhm
 - inserts with plate, for section conductors: 0.75 ÷ 6 mm² - AWG 18 ÷ 10
 - conductors stripping length: 10.5 mm
 - terminal screw torque: 1.2 Nm
 - enclosures: size 77.27:
- C-TYPE IP65/IP66
C7 IP67 stainless steel lever
V-TYPE IP65/IP66 stainless steel lever

- T-TYPE IP65 insulating
- JEI zinc-plated steel lever
- BIG hoods
- W-TYPE aggressive environments
- EMC
- central lever
- IP68
- panel supports: COB

Dimensions shown in mm are not binding and may be changed without notice.

California Proposition 65 Information



WARNING

This product can expose you to lead and its compounds, known to the State of California to cause cancer and/or reproductive toxicity. For more information go to www.P65Warnings.ca.gov.

California Proposition 65 Information



WARNING

This product can expose you to lead and its compounds, known to the State of California to cause cancer and/or reproductive toxicity. For more information go to www.P65Warnings.ca.gov.
