

## NH fuse switch-discon. size 1, 250 A, panel mounting (33 201)



### Description

#### Article

Part No.: 33 201

QUADRON® Panel

NH fuse switch-discon. size 1, 250 A, panel mounting

connection screw M10

#### System

Mounting plate

Product group 09

Subgroup 06

pack size 1

EAN 4021267332013

#### Advantages of the product

For safe connection of the leads, the shock protection is split into 2.

Self-closing inspection holes are available in the cover.

Catalog page 2015 : 6/19

eCl@ss 6.1 27142108  
eCl@ss 7.1 27142108  
ETIM 4.0 EC001040  
ETIM 5.0 EC001040

## Approvals

### Standards

IEC 60947-1:2007 + A1:2010  
IEC 60947-3:2008 + A1:2012

### Approvals

IEC (CB), Germanischer Lloyd, VDE, CCC



Type number: QCB-NH1

CCC certificate: 2012010302563561

## Product data

### Electrical data

Rated current (IEC): 250 A  
Rated voltage (IEC) AC: 690 V  
Rated voltage (IEC) DC: 440 V

Utilisation category AC-22B (400V)  
AC (IEC 60947-3) : AC-23B (400V/160A)  
AC-21B (690V)  
AC-20B (1000V) at pollution degree 2

visible information required if used at more than 690V AC: do not switch under load

Utilisation category DC specifications: 2 current paths (L1,L3) in series  
DC (IEC 60947-3) : DC-20B (440V)  
DC-20B (1000V) at pollution degree 2

visible information required if used at more than 440V DC: do not switch under load

#### Power dissipation:

The power dissipation at a typical load of 80% of the rated current results to 9 W.  
(The power dissipation for operation with rated current would be 14.1 W.)

rated isolation voltage  $U_i$  (AC): 800 V  
Rated surge voltage  $U_{imp}$  : 6 kV  
max. permitted voltage (IEC) AC: 800 V  
max. permitted voltage (IEC) DC: 800 V

rated peak withstand current  $I_{pk}$  : 13.7 kA  
cond. rated short-circuit current with fuses: 80 kA / 690 V  
approved with fuse links of characteristics: gG  
rated short-time withstand current  $I_{CW}$  : 8,1kA / 1s

for fuse links IEC 60269-2-1 (I) / DIN VDE 0636-201 size 1 up to 23W power dissipation

Entsprechend den angegebenen AC- und DC- Schalteigenschaften und unter Berücksichtigung der Überlastbedingungen, sind gewisse Abstände zu geerdeten Metallteilen einzuhalten. Nähere Informationen auf Anfrage.

Bei Verwendung als Trennschalter ist die Einhaltung der Abstände nicht erforderlich.

Degree of protection IP30 at front, degree of protection near terminal depends on installation

## **Mechanical data**

W x H x D: 184 x 243 x 112

Weight: 171 kg/100

Poles: 3-pole

front degree of protection: IP30

## **Terminal points**

screw M10

## **Material properties**

Main body: temperature stability 125°C,  
self-extinguishing in acc. to UL 94,  
creepage resistance CTI 200,  
halogen-free

Shock protection cover: temperature stability 125°C,  
self-extinguishing in acc. to UL 94,  
creepage resistance CTI 200

Handle: temperature stability 125°C,  
self-extinguishing in acc. to UL 94,  
creepage resistance CTI 200,  
halogen-free

Contacts: spring-loaded copper contacts, silver plated

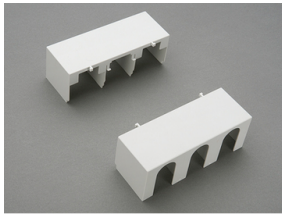
## **Version**

Variant with box terminals: 33 393

Variant with electromechanical fuse monitoring: 33 149

Variant with electronic fuse monitoring: 33 330

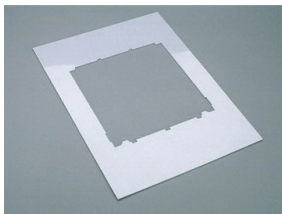
## Accessories



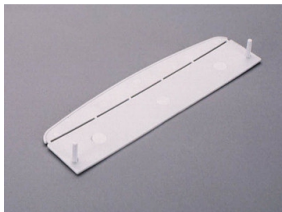
**33 142**  
cover for cable lugs  
for NH fuse switch disconnecter size 1



**33 145**  
prism terminal, double  
2x 35-70 mm<sup>2</sup>  
size 1



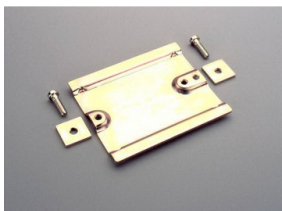
**33 152**  
Trim frame  
215 x 330  
size 1



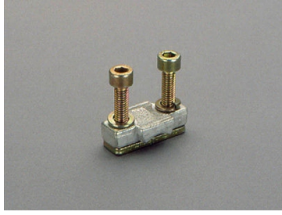
**33 155**  
barrier for handle  
for fuse switch-disconnector size 1-3



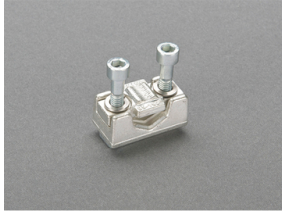
**33 157**  
lid interlock  
for sealing wire and padlocks  
Size 1 - 3



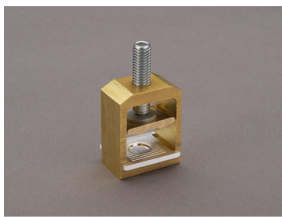
**33 158**  
rapid mounting set  
rails centre distance 125 mm or 150 mm  
size 1 - 2



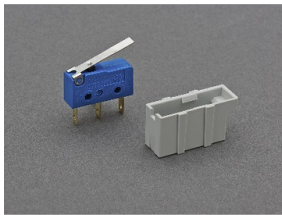
**33 163**  
clamp-type connection  
70-150 mm<sup>2</sup>  
size 1



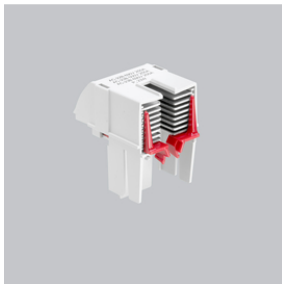
**33 166**  
prism terminal for fuse switch-disconnector  
35-150mm<sup>2</sup>, Cu and Al  
size 1



**33 909**  
box terminal



**33 917**  
pilot switch for lid position  
pilot switch: 1 reversing switch: 250V AC / 5A; 30V DC / 4A  
Size 1



**33 918**  
arcing chamber  
QCB-NH1