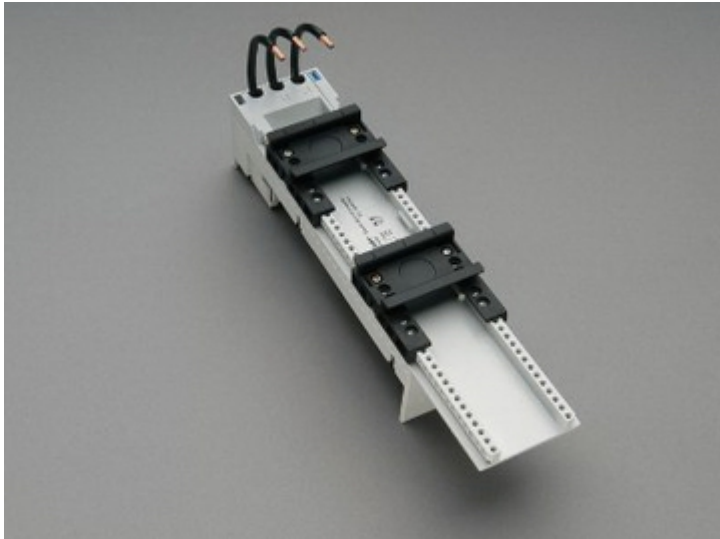


## adapter EEC 63 A, 2 adjustable mounting rails (32 461)



### Description

#### Article

Part No.: 32 461

EQUES® 60Classic

adapter EEC 63 A, 2 adjustable mounting rails

2 verschiebbare Tragschienen

54 x 260

for busbars 12, 15, 20, 25, 30 x 5, 10 and section busbars

#### System

60Classic

Product group 05

Subgroup 24

pack size 4

EAN 4021267324612

#### Advantages of the product

Conductor ends ultrasonically sealed.

Click mechanism when pushing onto the busbar.

eCl@ss 6.1 27370304  
eCl@ss 7.1 27370304  
ETIM 4.0 EC001531  
ETIM 5.0 EC001531

## Approvals

### Standards

IEC 61439-1:2011

### Approvals

CSA, UL, Germanischer Lloyd



for UL feeder circuits >250V

Type number: EEC6063-L

UL file: E123577, UL category (for USA): NMTR <http://www.ul.com>

UL file: E123577, UL category (for Canada): NMTR7 <http://www.ul.com>

CSA file: 110285, CSA class: 3211-37 <http://directories.csa-international.org>

CCC approval: no certification required

## Product data

### Electrical data

Rated current (IEC): 63 A

Rated voltage (IEC) AC: 690  
V

Rated current (UL): 65 A

Rated voltage (UL) AC: 600  
V

Power dissipation:

The power dissipation at a typical load of 80% of the rated current results to 4.4 W.

(The power dissipation for operation with rated current would be 6.9 W.)

rated isolation voltage  $U_i$  (AC): 800  
V  
Rated surge voltage  $U_{imp}$  : 6 kV  
max. permitted voltage (IEC) AC: 800  
V  
max. permitted voltage (IEC) DC: 800  
V

short-circuit withstandability: the motor starter gives the protection to the adapter

### **Mechanical data**

W x H x D: 54 x 260 x 63  
Weight: 43 kg/100  
Poles: 3-pole  
for busbars: 12, 15, 20, 25, 30 x 5, 10 and section busbars

### **Material properties**

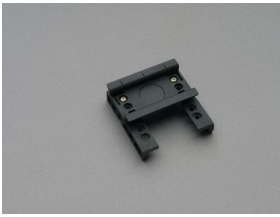
Body: temperature stability 125°C,  
self-extinguishing in acc. to UL 94,  
creepage resistance CTI 600,  
halogen-free  
DIN rail: temperature stability 125°C,  
self-extinguishing in acc. to UL 94,  
creepage resistance CTI 550,  
halogen-free  
Screws: screw +/- (PZ1), galvanized, chromized

Conductor insulation: temperature-resistant up to 105 °C

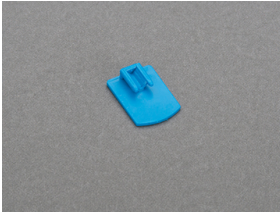
### **Reference**

For compact mounting of complete motor circuits with commercially available switchgear and safe mechanical and electrical connection to the busbar system.

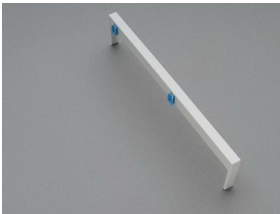
## Accessories



**32 948**  
mounting rail 54mm  
for EEC and EMC



**32 969**  
mounting rail end stop



**32 963**  
side-mounted module EEC  
attachable at both sides  
9 x 200