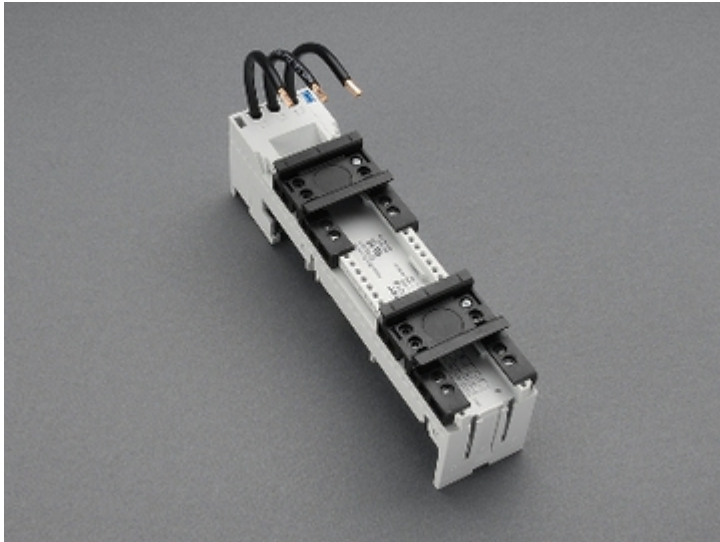


busbar adapter 32 A (32 434)



Description

Article

Part No.: 32 434

EQUES® 60Classic

busbar adapter 32 A

for direct starter Schneider Electric GV2-M/P

45 x 200, with leads AWG 10 (6 mm²)

for busbars 12, 15, 20, 25, 30 x 5, 10 and section busbars

System

60Classic

Product group 05

Subgroup 21

pack size 4

EAN 4021267324346

Advantages of the product

Conductor ends ultrasonically sealed.

Click mechanism when pushing onto the busbar.

eCl@ss 6.1 27370304
eCl@ss 7.1 27370304
ETIM 4.0 EC001531
ETIM 5.0 EC001531

Approvals

Standards

IEC 61439-1:2011

Approvals

CSA, UL, Germanischer Lloyd



for UL feeder circuits >250V

Type number: EEC6025-L

UL file: E123577, UL category (for USA): NMTR <http://www.ul.com>

UL file: E123577, UL category (for Canada): NMTR7 <http://www.ul.com>

CSA file: 110285, CSA class: 3211-37 <http://directories.csa-international.org>

CCC approval: no certification required

Product data

Electrical data

Rated current (IEC): 32 A

Rated voltage (IEC) AC: 690
V

Rated current (UL): 25 A

Rated voltage (UL) AC: 600
V

Power dissipation:

The power dissipation at a typical load of 80% of the rated current results to 1.6 W.

(The power dissipation for operation with rated current would be 2.5 W.)

rated isolation voltage U_i (AC): 800
V
Rated surge voltage U_{imp} : 6 kV
max. permitted voltage (IEC) AC: 800
V
max. permitted voltage (IEC) DC: 800
V

let-through current I_d : 8,6kA @ GV2 32A 40kA / 415V
8,6kA @ GV2 10A 100kA / 415V
short-circuit withstandability: the motor starter gives the protection to the adapter
SCCR: 30kA @ GV2P 12,5A, 600Vac
65kA @ GV2P 25A, 480Vac
50kA @ GV2P 32A, 480Vac
65kA @ GV2P 16A, 480Vac

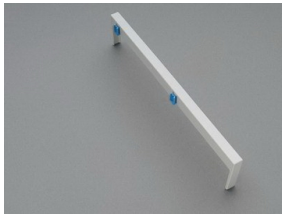
Mechanical data

W x H x D: 45 x 200 x 63
Weight: 33.3 kg/100
Poles: 3-pole
for busbars: 12, 15, 20, 25, 30 x 5, 10 and section busbars

Material properties

Body: temperature stability 125°C,
self-extinguishing in acc. to UL 94,
creepage resistance CTI 600,
halogen-free
DIN rail: temperature stability 125°C,
self-extinguishing in acc. to UL 94,
creepage resistance CTI 550,
halogen-free
Screws: screw +/- (PZ1), galvanized, chromized

Accessories



32 963

side-mounted module EEC

attachable at both sides

9 x 200